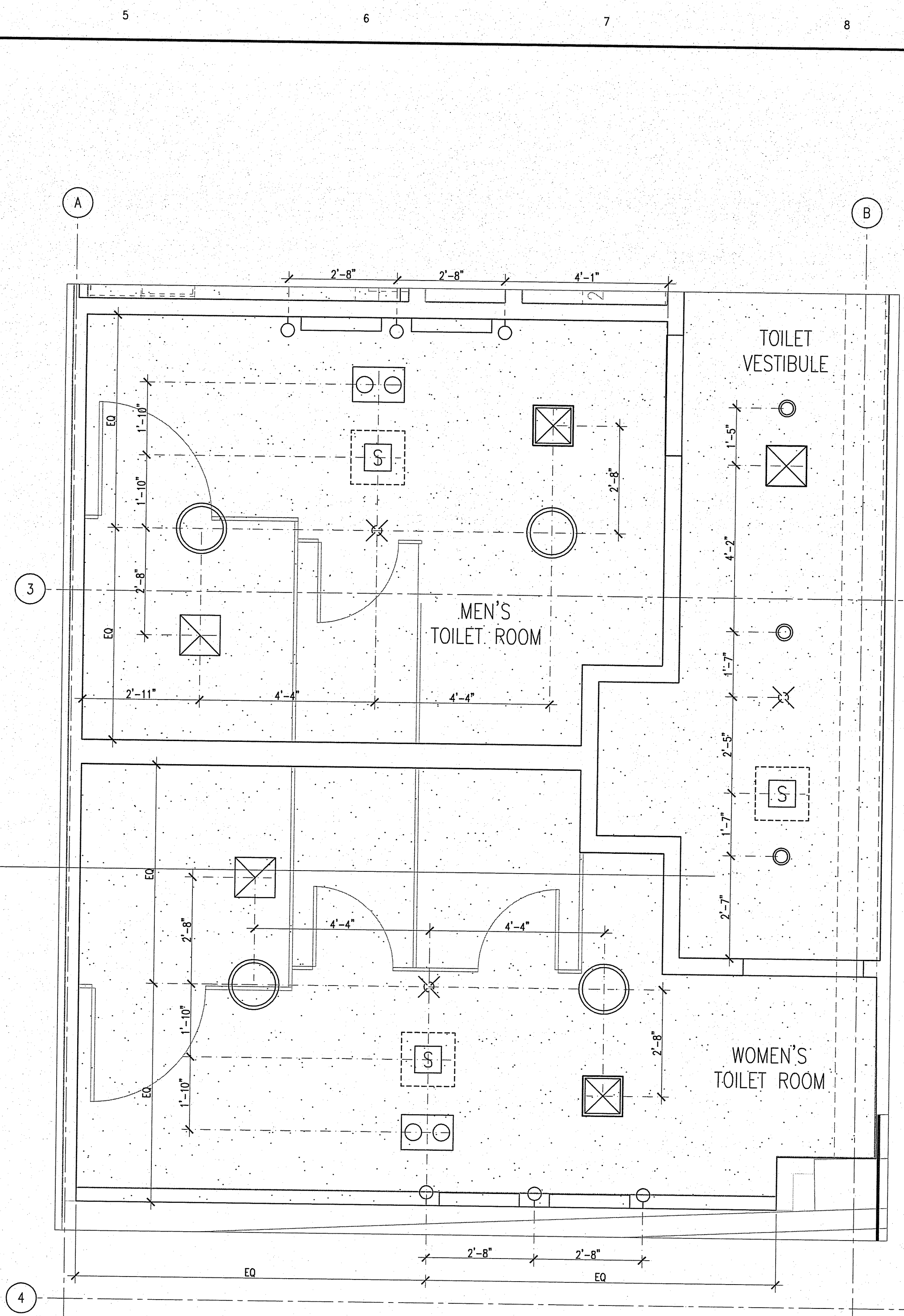
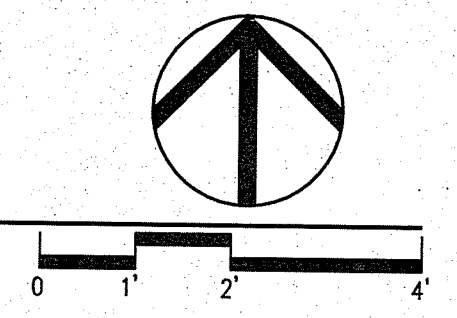
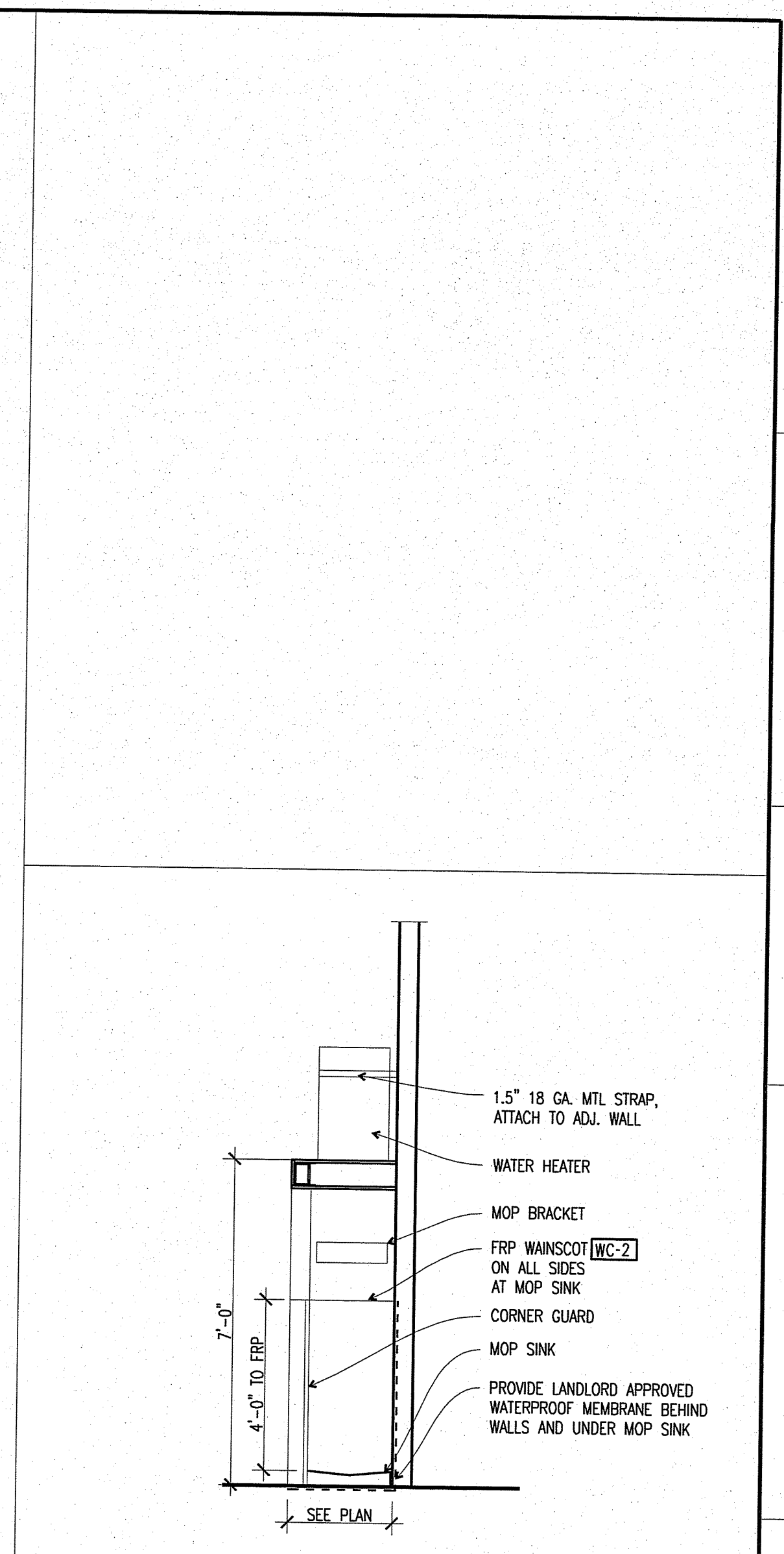
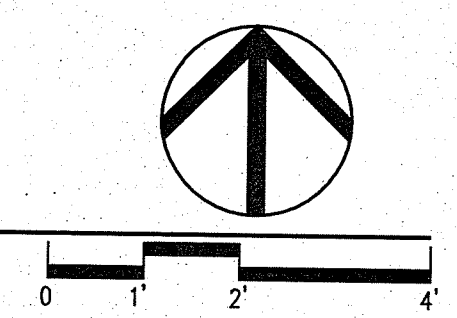


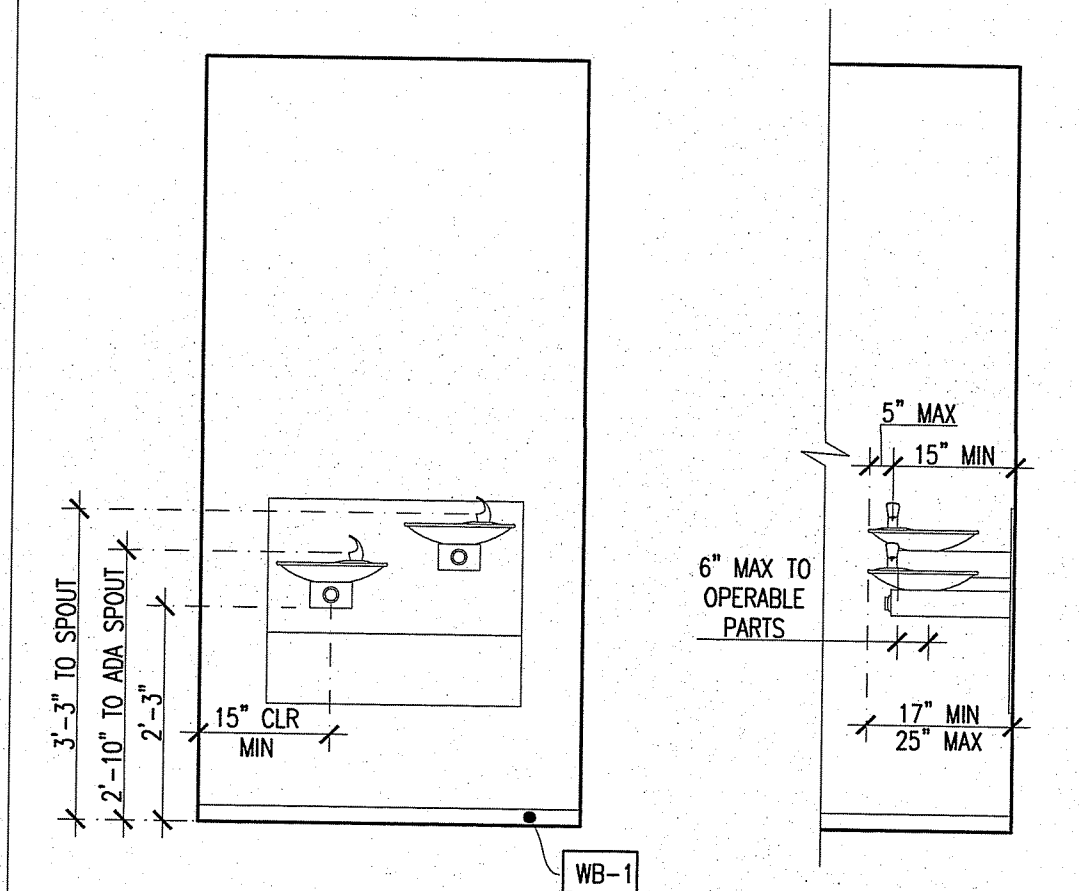
A1 ENLARGED TOILET ROOMS PLAN
1/2"=1'-0"



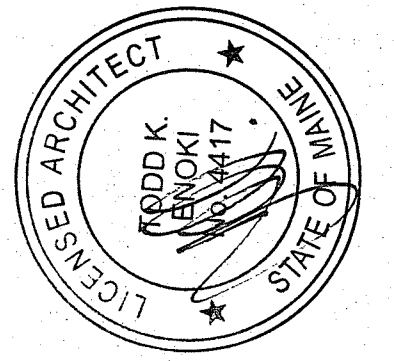
D1 ENLARGED TOILET ROOMS REFLECTED CEILING PLAN
1/2"=1'-0"



C9 MOP SINK
3/8"=1'-0"



A9 DRINKING FOUNTAIN
1/2"=1'-0"



CALLISONRTKL
A DESIGN CONSULTANCY OF ARCADIS
CALLISONRTKL, INC.
www.callisonrtkl.com

west elm
Downtown Portland
164 Middle Street
Portland, ME 04101
PROJECT #006-160335.00

ISSUED / REVISED	DATE
PRELIMINARY SET	09/08/16
LL COORDINATION SET	11/08/16
LUPERMIT SET	11/21/16

INTERIOR DETAILS

A-805

OWNER:
WILLIAMS-SONOMA, INC.
3250 Van Ness Avenue
San Francisco, CA 94109
T 415 616 8602
F 415 439 8164
www.williams-sonomainc.com